



Uniblock 25

Uniblock 25

Beschreibung Kunststoff PA, Nut 8, 9, 10, 12
 zur einfachen Befestigung von Flächenelementen
 an Aluminiumprofilen

Material Block: Kunststoff PA, glasfaserverstärkt
 Mutter: Stahl, verzinkt

Farbe schwarz

Liefereinheit 100 Stück

Extras individueller Hammer, weitere Farben auf Anfrage

Nylon PA, Slot 8, 9, 10, 12

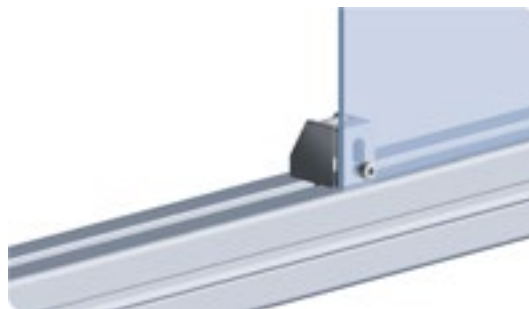
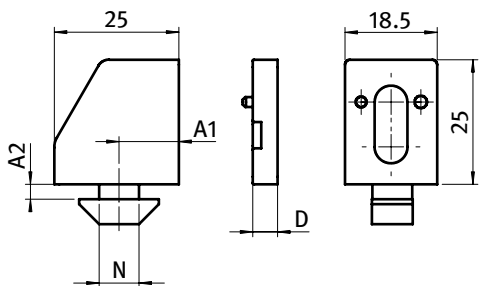
Description *To attach panels easily to aluminum profiles*

Material *Block: Nylon PA, glass fibre reinforced*
Nut: Zinc plated steel

Color *Black*

Pack Quantity *100 pieces*

Specials *Customized hammer, other colors on request*



Uniblock 25	N	Gewinde Thread	A1 [mm]	A2 [mm]	D [mm]	Gewicht [g] Weight [g]		Teil-Nr. Part #
	8	M4	A1	A2	-	10.5		UNI25N8M4
	8	M5	A1	A2	-	10.5		UNI25N8M5
	8	M6	A1	A2	-	10.5		UNI25N8M6
	10	M4	A1	A2	-	10.5		UNI25N10M4
	10	M5	A1	A2	-	10.5		UNI25N10M5
	10	M6	A1	A2	-	10.5		UNI25N10M6
	12	M4	A1	A2	-	10.5		UNI25N12M4
	12	M5	A1	A2	-	10.5		UNI25N12M5
	12	M6	A1	A2	-	10.5		UNI25N12M6
	8	M4	8.0	4.35	-	9.8	I	094003M4
	8	M5	8.0	4.35	-	9.7	I	094003M5
	8	M6	8.0	4.35	-	9.6	I	094003M6
	8	M4	12.0	4.4	-	9.8	I	094020M4
	8	M5	12.0	4.4	-	9.7	I	094020M5
	8	M6	12.0	4.4	-	9.6	I	094020M6
	8	M4	14.0	4.6	-	10.0	I	094080M4
	8	M5	14.0	4.6	-	9.9	I	094080M5
	8	M6	14.0	4.6	-	9.8	I	094080M6
	10	M4	8.5	5.7	-	10.6	B	094008M4
	10	M5	8.5	5.7	-	10.5	B	094008M5
	10	M6	8.5	5.7	-	10.4	B	094008M6
	10	M4	9.5	5.6	-	10.6	B	094004M4
	10	M5	9.5	5.6	-	10.5	B	094004M5
	10	M6	9.5	5.6	-	10.4	B	094004M6
	10	M4	14.0	6.0	-	10.4	B	094005M4
	10	M5	14.0	6.0	-	10.3	B	094005M5
	10	M6	14.0	6.0	-	10.2	B	094005M6
Distanzstück <i>Spacer</i>	-	-	-	-	*2.0	1.0		094102
	-	-	-	-	3.0	1.2		094103
	-	-	-	-	5.0	2.1		094105

* keine weiteren Distanzstücke aufsteckbar!

* no further spacers can be added!